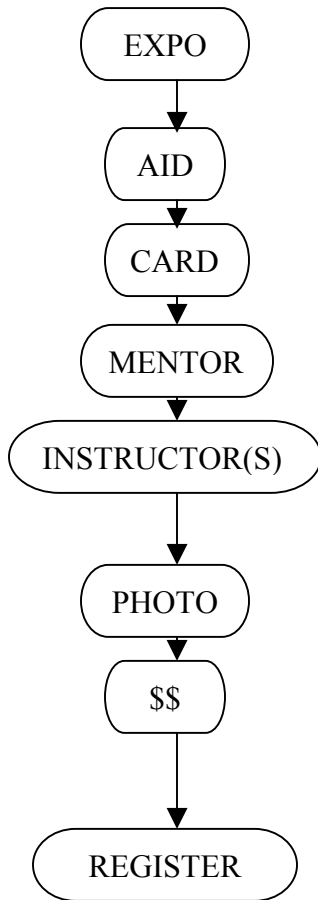


**January Term 2005 Expo – Travel Opportunities**  
**Tuesday, April 27<sup>th</sup>, 11:00 a.m. to 12:30 p.m.**  
**Wright Campus Center Hallways**



**Registration procedures for students:**

1. Attend the Jan Term expo and speak with instructors in courses of interest or the CSOC (Career Study Off-Campus) representative.
2. If you are using financial aid to finance your course, you must apply for financial aid at the time of registration. A financial aid representative will be at the Jan Term on April 27<sup>th</sup>.
3. Beginning **Wednesday, April 28<sup>th</sup>**, you may pick up your registration card at the registrar's office, Administration Building lobby. If you will be traveling out of the country, also pick up an International Student Identification (ISIC) application form.
4. Meet with your mentor for advice and a signature.
5. Speak with instructors of courses you are considering. Get permission to register for the course or courses you have selected. You may want to get permission for more than one course, depending on your classification.
6. If traveling outside the U.S., complete the International Student Identification Card (ISIC) application form and take it to campus police to make your ISIC photo. They are available Monday – Friday 9:00 -11:00 a.m. and 1:00 - 4:00 p.m. Campus police will sign and date the application form to indicate that your photo has been made.
7. On your day you register, pay your deposit at the business office, Administration Building lobby. Deposit is \$100 for courses within U.S. and \$125 for courses outside the U.S.
8. Take your registration card with instructor and mentor permissions and your completed ISIC application form if applicable to the registrar's office. Complete a Financial Obligation Form.
9. **Registration dates:** Rising seniors may register beginning **May 4<sup>th</sup>** (Tuesday). Rising juniors begin **May 5<sup>th</sup>** (Wednesday). All others register beginning **May 6<sup>th</sup>** (Thursday). The final registration date is May 18<sup>th</sup>. (Registration will be conducted again on September 21-23 for travel courses still open at that time.)
10. Half the course cost for the January Term travel courses is due on **October 1, 2004**. The second half is due on **November 1, 2004**. Students who do not make their first payment will be dropped from the course and their deposit will not be refunded.

**Courses will be offered only if demand is sufficient. The number of registrations with paid deposits will determine which courses will be offered January Term 2005.**